

### OPW Loose-Fill Pipe Cap Assemblies

Loose-Fill Pipe Cap Assemblies are installed in spill containment manholes on fill riser pipes from an underground fuel storage tank. They are used when a tight-fill connection is not required.

### OPW 83

The OPW 83 Fill Cap Assembly threads onto the fillpipe of an underground or aboveground tank. The screw-on cap is gasketed to ensure a tight seal against air, water, dust and debris. The 83 can be locked with a padlock or wire seal.

### Materials

**Body:** ZA alloy  
**Cap:** Cast iron  
**Gasket:** Nitrile



83 Fill Cap

### Ordering Specifications

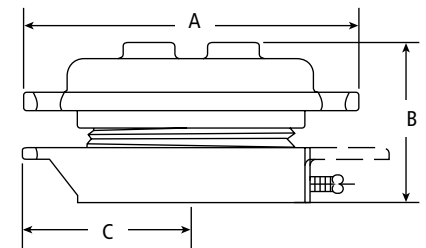
Product #	Riser Thread			
	in.	mm	lbs.	kg
83-0022	2	51	2.46	1.12

### Replacement Parts

Part #	in.	mm	Description
H04898M	2	51	Cap
H01608M	2	51	Gasket

### Dimensions

	2" (51mm)	
	in.	mm
A	4 <sup>5</sup> / <sub>8</sub>	118
B	2 <sup>7</sup> / <sub>16</sub>	62
C	2 <sup>11</sup> / <sub>32</sub>	60

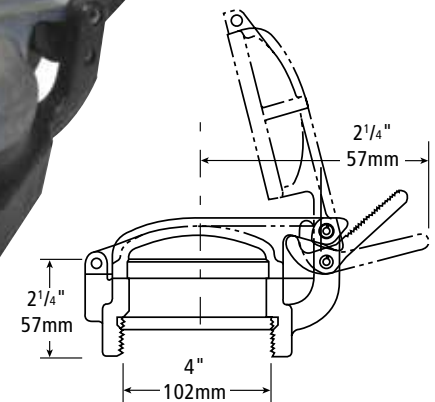


### OPW 269 Sanitary Tank Hatch

The OPW 269 Sanitary Tank Hatch threads onto the fill pipe of an underground sanitary waste disposal tank. The 269 is foot-operated and quick-opening/closing for clean emptying of sanitary waste from RVs, campers and travel trailers. The non-recessed design provides straight-through flow to eliminate entrapment of waste materials.

### Materials

**Body:** Coated ductile iron  
**Cap:** Zinc



### Ordering Specifications

Product #	Riser Thread			
	in.	mm	lbs.	kg
269-0085	4	102	10.92	4.91

### Replacement Parts

Part #	Description
D00800B	Cap
H05783DI	Treadles
H05784M	Pin

