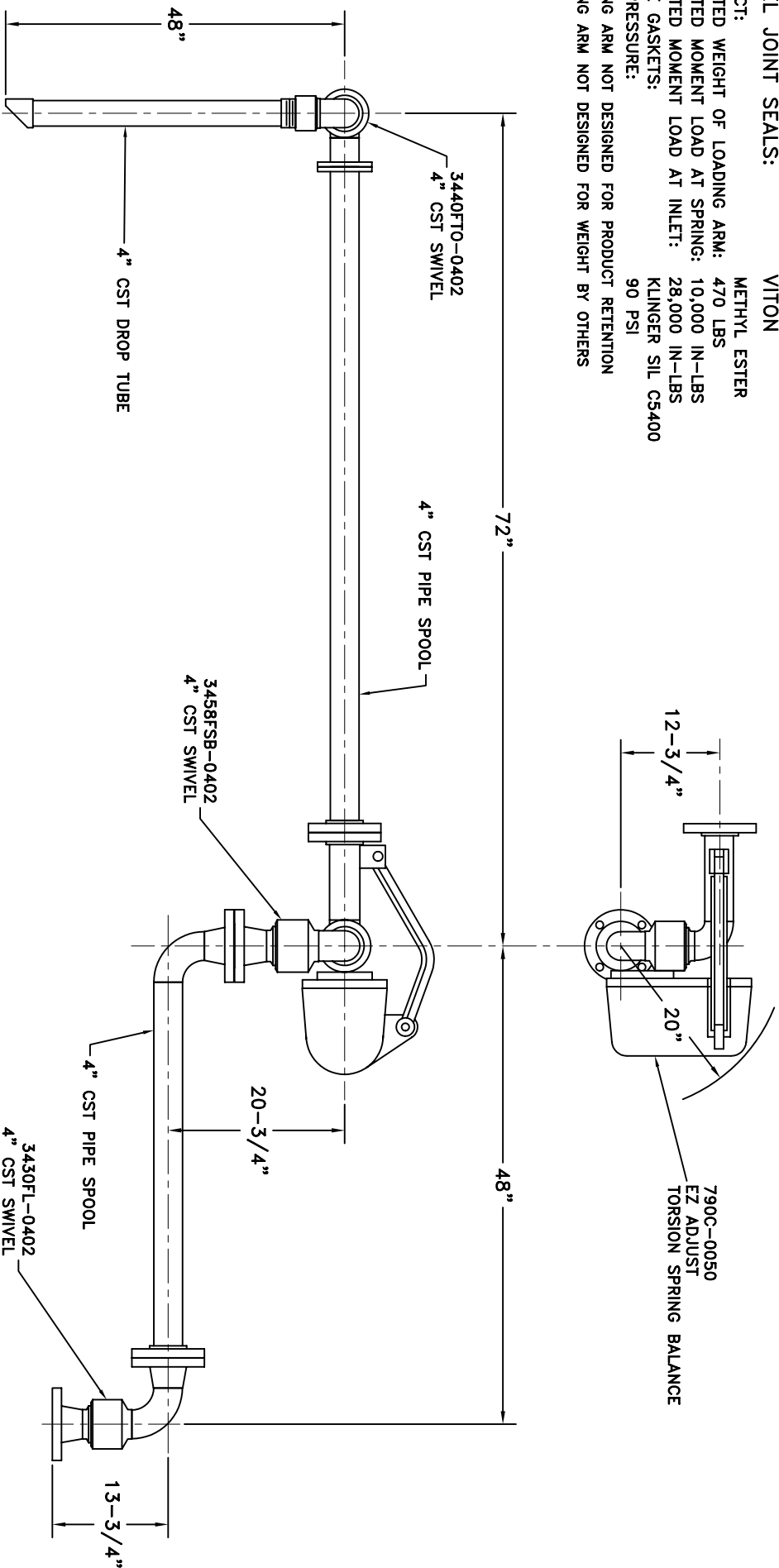


**MATERIALS OF CONSTRUCTION: CARBON STEEL  
SWIVEL JOINT SEALS: VITON**

**PRODUCT: METHYL ESTER**  
**ESTIMATED WEIGHT OF LOADING ARM: 470 LBS**  
**ESTIMATED MOMENT LOAD AT SPRING: 10,000 IN-LBS**  
**ESTIMATED MOMENT LOAD AT INLET: 28,000 IN-LBS**  
**FLANGE GASKETS: KLINGER SIL CS400**  
**TEST PRESSURE: 90 PSI**  
**LOADING ARM NOT DESIGNED FOR PRODUCT RETENTION**  
**LOADING ARM NOT DESIGNED FOR WEIGHT BY OTHERS**



- H30133M 8 BOLT
- H06454M 8 NUT
- H30134M 8 WASHER
- C03278M 1 GASKET
- H30314M 24 BOLT
- H04740M 24 WASHER
- H02507M 3 GASKET
- H04190M 1 INSTRUCTION SHEET
- H02209PA 1 ALUM. NAME PLATE
- H30446M 2 SST TIE BANDS
- H30447M 2

OPERATION	A	B	C	D
WELD				
MACHINE				
ASSY & TEST				
TEST ONLY				
PAINT				

**4" GT32F-G546**

**OPW** *Engineered Systems*  
[www.opw-es.com](http://www.opw-es.com)

DRAWN BY: JLP SCALE: NONE  
 CHECKED BY: DATE: 6/26/08  
 QUOTE NO. 19043 DRAWING NO. SK19043B

1. HIGH LIGHT RECD. OPERATIONS PER ASSY.  
 2. RECORD CLOCK NO. WHEN COMPLETE.