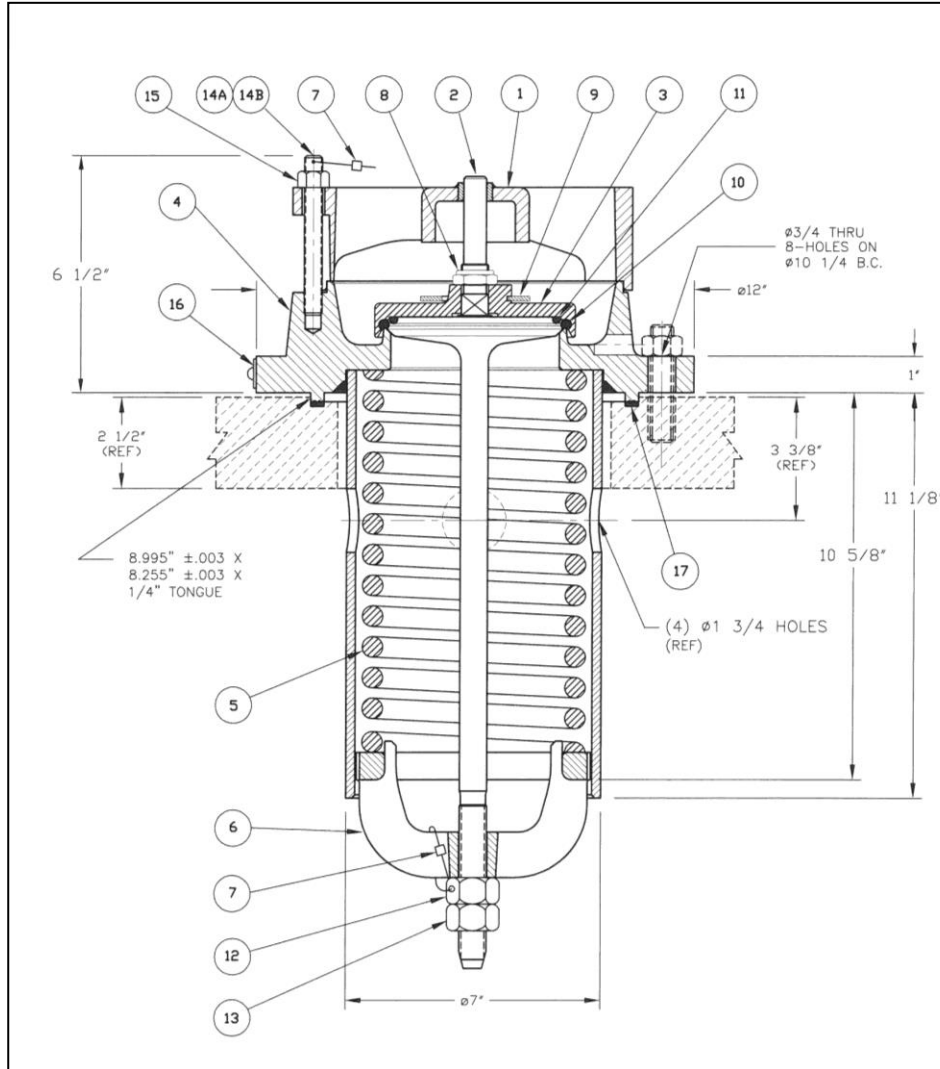


# A-2099-PI-MO



ITEM NO.	QTY.	PART NAME	MATERIAL	PART NUMBER			NOTE
				A-2099-PI-MO	A-2099-PI-MO-PRA	A-2099-PI-MO-PRA-PA	
1	1	TOP GUIDE	STAINLESS	23-1-SS	23-1-SS	23-1-SS	
2	1	STEM	STAINLESS	29-2-SS	29-2-SS	29-2-SS-PA (5)	3
3	1	RETAINER	STAINLESS	29-3-MO	29-3-MO-PRA (4)	29-3-MO-PRA-PA (4, 5)	3
4	1	BODY ASSEMBLY	STAINLESS	29-41-MO	29-41-MO-PRA (4)	29-41-MO-PRA-PA (4, 5)	3
5	1	SPRING	STAINLESS	29-5-SS	29-5-SS	29-5-SS	3
6	1	FOLLOWER	STAINLESS	29-6-MO	29-6-MO-PRA (4)	29-6-MO-PRA-PA (4, 5)	3
7	2	SEAL	STAINLESS	22-72-SS	22-72-SS	22-72-SS	
8	1	TOP LOCK NUT	STAINLESS	23-8-SS	23-8-SS	23-8-SS	
9	1	WASHER	NEOPRENE	23-9-NE	23-9-NE	23-9-NE	1
10	1	SEAT "O" RING	BUNA-N	29-10-BN	29-10-BN	29-10-BN	1
11	1	STEM "O" RING	BUNA-A	29-11-BN	29-11-BN	29-11-BN	1
12	1	ADJUSTMENT NUT	STAINLESS	23-12-MO	23-12-MO-PRA (4)	23-12-MO-PRA-PA (4, 5)	3
13	1	LOCK NUT	STAINLESS	23-13-MO	23-13-MO-PRA (4)	23-13-MO-PRA-PA (4, 5)	3
14A	2	STUD	STAINLESS	23-14-SS	23-14-SS	23-14-SS	
14B	2	STUD W/ HOLE	STAINLESS	23-141-SS	23-141-SS	23-141-SS	
15	4	NUT	STAINLESS	23-15-SS	23-15-SS	23-15-SS	
16	1	NAMEPLATE	STAINLESS	20-99-SS	20-99-SS	20-99-SS	
17	1	GASKET	COMP. ASB.	27-17-GY	27-17-GY	27-17-GY	1, 2

**NOTES:**

1. ALTERNATE MATERIALS AVAILABLE.
2. NOT FURNISHED UNLESS REQUESTED.
3. WETTED PARTS.
4. PARTS TO BE PRACTICE A CERTIFIED FOR A-2099-PI-MO-PRA & A-2099-PI-MO-PRA-PA.
5. PARTS TO BE PASSIVATED & FERROXYL TESTED FOR A-2099-PI-MO-PRA-PA.

PRESSURE SETTING (PSIG)	FLOW RATE (SCFM AIR)
75	20,555

NET FLOW AREA: 16.36 SQ. IN.  
WEIGHT OF VALVES: 92 LBS.  
FLOW RATED @ 85 PSIG.

/AAR PRD122006